

Guide to Fitting Handle-less Rail

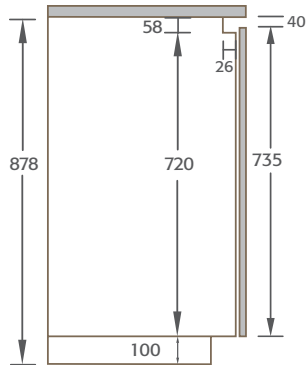
Handle-less Rail

This rail is designed to be fitted to carcass to give a clean, modern, flush look.

Step 1 - Preparing Carcass

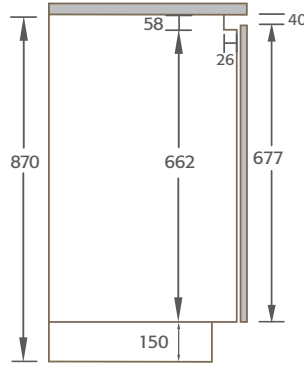
If using plant-on end panels, cut out all carcass gables as shown. If using carcass gable as end panels do not cut out outer carcass gables to allow rails to butt into.

Dimensions when using integrated appliances

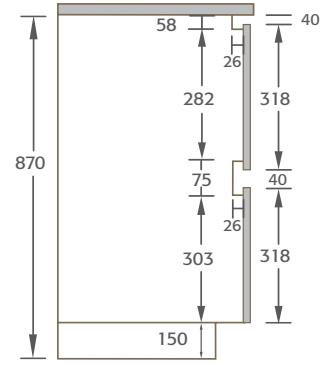


Door 735mm high with 40mm space

Dimensions for standard door and drawer carcass without integrated appliances

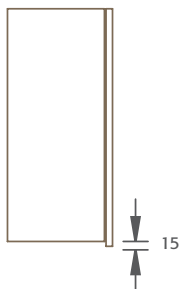


Door 677mm high with 40mm space



Drawer fronts 318mm with 40mm space

Wall Units

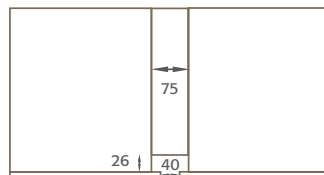


Options for wall units when using handle-less rail on base units.

- order and fit doors with a 15mm overhang.
- or use standard fit doors with spring catches.

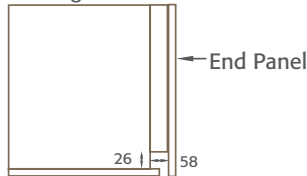
Plan View for Tall Unit with Vertical Rail

Double Unit



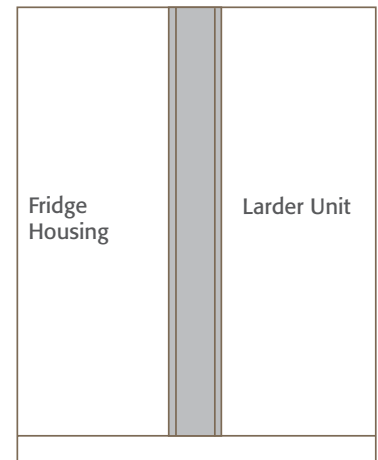
Door Size = Standard door width + 18mm (use mid fit rail)

Single Unit

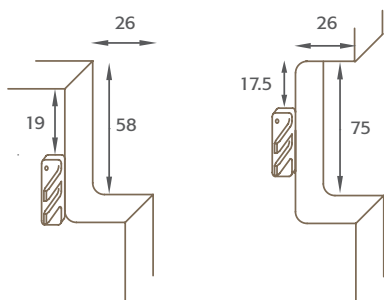


Door Size = Standard door width + 18mm (use top fit rail)

Tall Fridge / Larder Unit



Step 2 - Fixing Rail Brackets

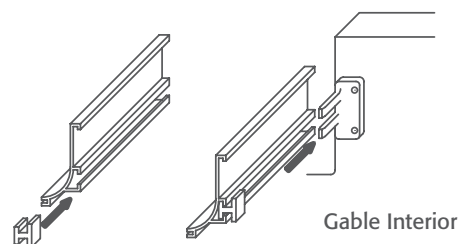


Screw fix brackets to all gables as shown.

Bracket Dimensions



Step 3 - Cut & Fix Rail



Cut rails to overall length of units if using plant-on end panels. If using carcass gables as end panels reduce size of rail by gable thickness.

Slot Connectors onto rails.

Position onto carcass and secure connectors onto brackets.