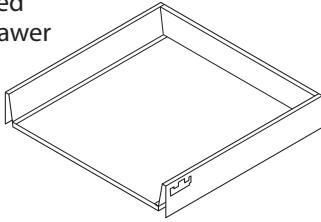
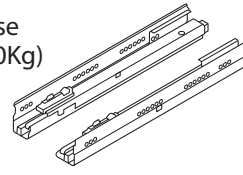


Pack Contents

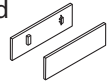
1 x pre-assembled 'M' height drawer



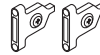
1 x pair of carcase members (30Kg)



1 x pair of handed cover caps



1 x pair of universal front fixing brackets



12x chipboard screws



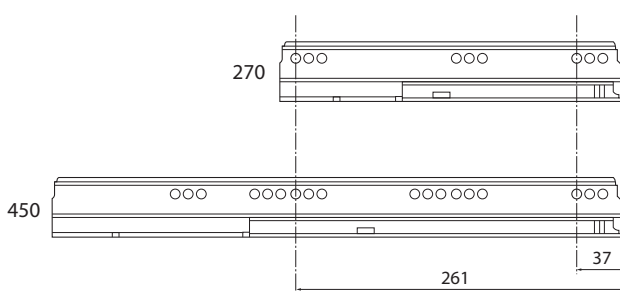
⚠ Important Information

This pre-assembled drawer is designed for installation into a cabinet constructed from 18mm thick board!

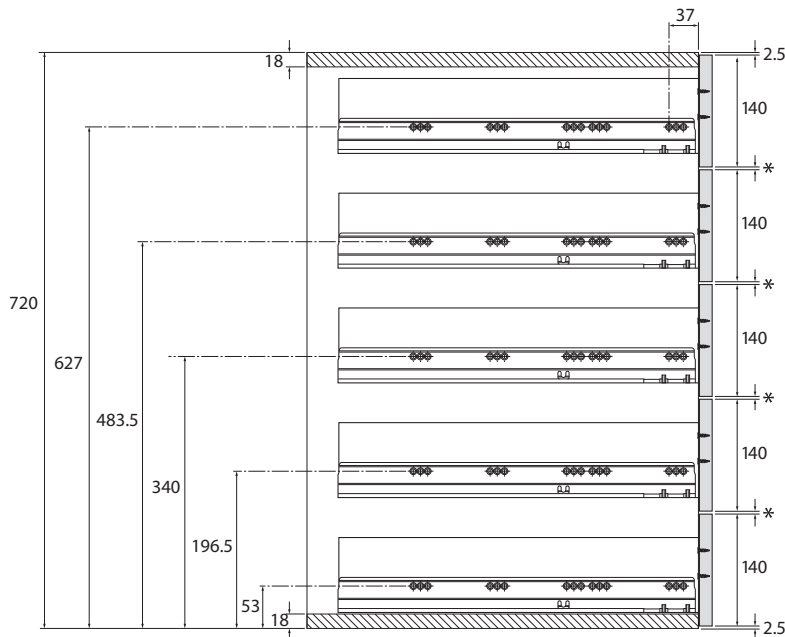
- All illustrations & dimensions are based on cabinets constructed from 18mm board.
- Dimension of 31.5mm for the positioning of front fixing brackets is based on drawer fronts 4mm narrower than external width of cabinet e.g. 496mm; for drawer fronts 5mm narrower e.g. 495mm, please amend dimension to 31mm; for drawer fronts 3mm narrower e.g. 497mm, please amend dimension to 32mm.
- All dimensions are in millimetres.

Cabinet Profile Fixing Positions

All 'M' height pre-assembled Tandemboxes are supplied with 30Kg capacity cabinet profiles.

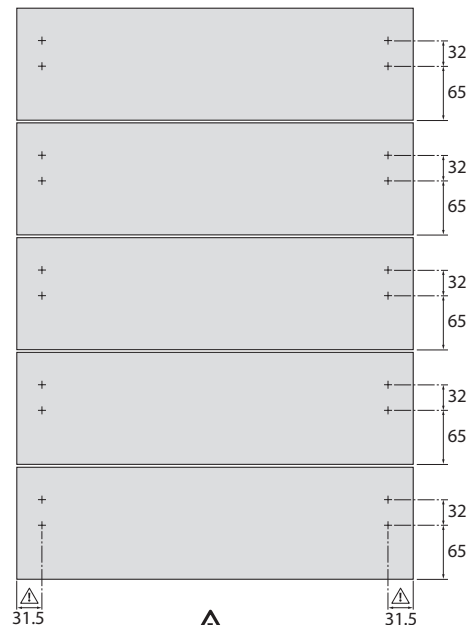


5 Drawer Pack Drilling Positions – 5x 140mm high drawer fronts



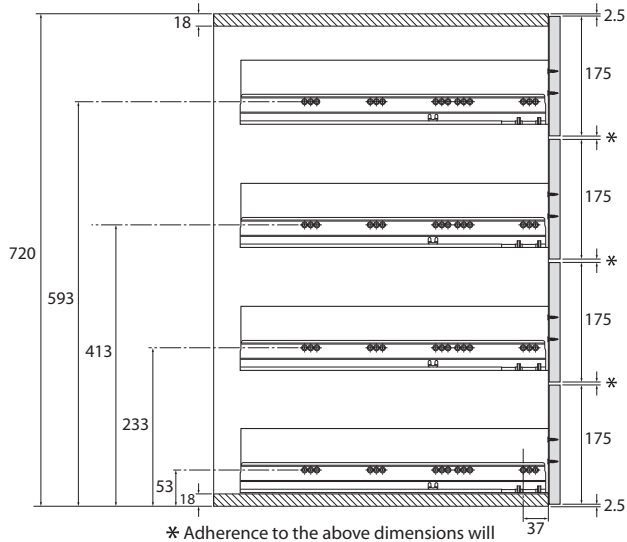
* Adherence to the above dimensions will ensure equal spacing between drawer fronts.

All dimensions are in millimetres.

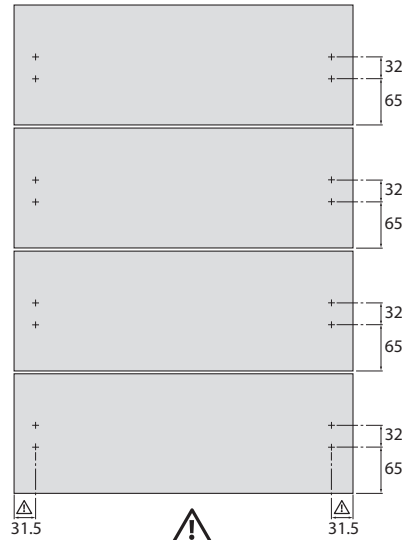


See notes in Important Information section

4 Drawer Pack Drilling Positions – 4x 175mm high drawer fronts

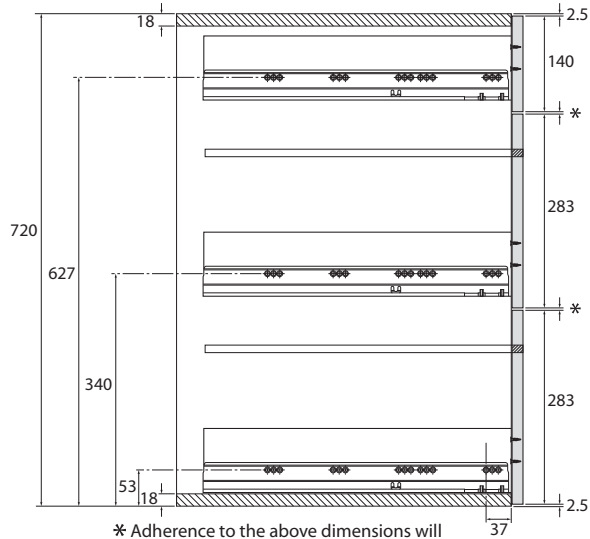


* Adherence to the above dimensions will ensure equal spacing between drawer fronts.
All dimensions are in millimetres.

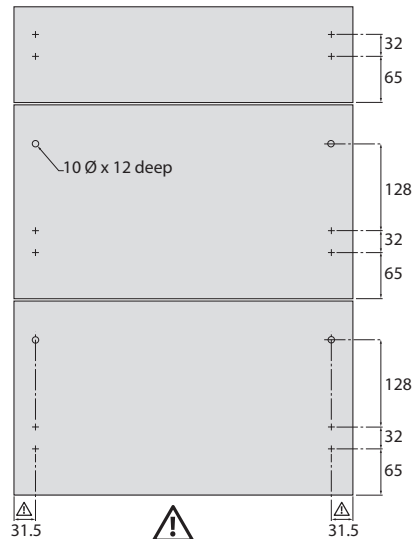


See notes in Important Information section

3 Drawer Pack Drilling Positions – 1x 140mm + 2x 283mm high drawer fronts



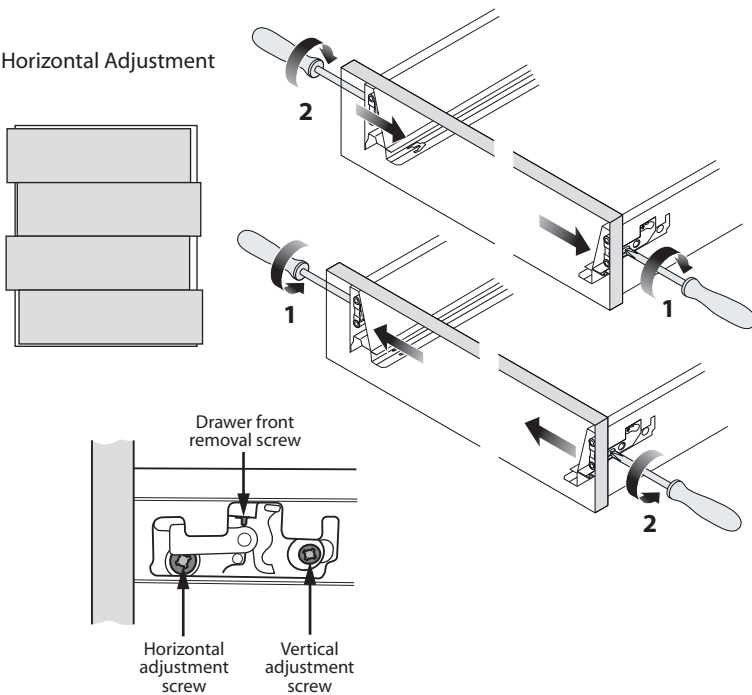
* Adherence to the above dimensions will ensure equal spacing between drawer fronts.
All dimensions are in millimetres.



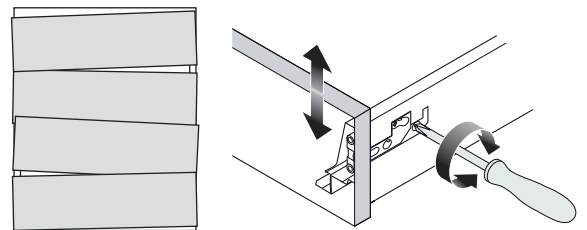
See notes in Important Information section

Drawer Front Adjustment

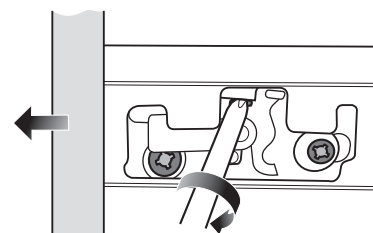
Horizontal Adjustment



Vertical Adjustment



Drawer front removal



To see a video of how to remove the drawer front go to – <http://www.blum.com/gb/en/02/50/index.php> - then click on the film entitled: 'TANDEMBOX drawer front removal'